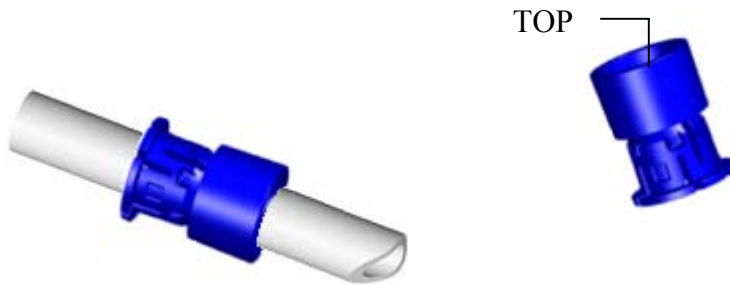


BarbLock[®]

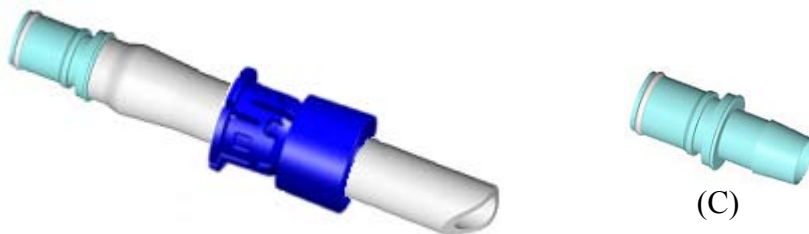
BarbLock Corporation

BarbLock Assembly Data Sheet (BL6)

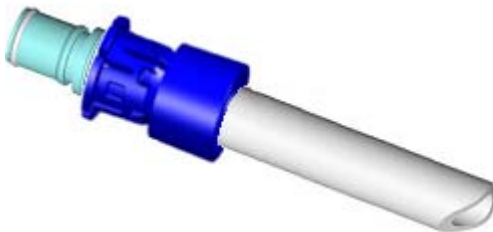
BarbLock[®] AL-Series Retainer Assembly



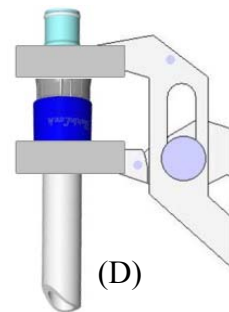
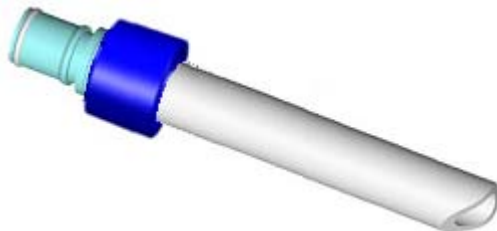
1. Install the Sleeve-Collet combination over tube, leading with end marked top.
(Do not separate the Sleeve from the Collet)



2. Install the barbed end of Fitting (C) into the tube.



3. Move Sleeve-Collet combination over barb, aligning base of Collet with end of tube. If the tubing is sticky, use the assembly tool to move the retainer into place.



4. Using the BarbLock Assembly tool (D), close Sleeve over Collet until locked.